

October 2023



Energy



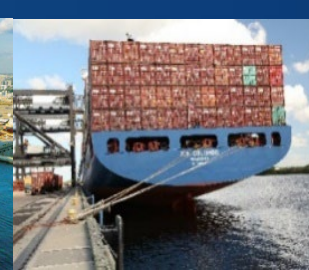
Fertilizer



Building Materials



Cruise



Containers



Refrigerated

Florida's largest and most diversified port

- Authority created 75 years ago, ISD
- Board governed, CEO led
- 34 million tons of cargo a year, 5000 acres
- Diverse mix of bulk, break-bulk & containers
- Huge and expanding local market
- Energy products gateway for Central Florida
- Major fertilizer export port
- Hub for shipbuilding & repair center
- Major cruise homeport
- Expanding container gateway for distribution centers & manufacturers
- Diverse lines of business = solid financial performance: Fitch 'A' Rating & Positive Outlook
- Over \$17B in economic impact supporting more than 85,000 jobs in Central Florida



PORT
TAMPA BAY™

REROUTE YOUR THINKING™



Energy



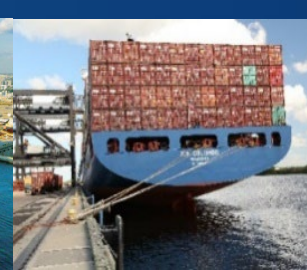
Fertilizer



Building Materials



Cruise



Containers



Refrigerated

- **Landlord Port**
- **Revenue Sources**
 - Leases
 - Dockage
 - Wharfage
 - State Funds FDOT FSTED
 - Federal Grants (FEMA Port Security & others)
 - Ad Valorem
- **Permitting Jurisdiction**
 - Deeded Sovereign Submerged Lands by State
 - 1st Port w/ Environmental Dept
 - Spoil Islands/Sanctuaries
- **Business Development/Marketing**
- **Communications**
- **Engineering**
- **Environmental**
- **Executive**
- **Facilities**
- **Finance**
- **Government Affairs**
- **HR**
- **IT**
- **Legal**
- **Operations**
- **Planning and Development**
- **Procurement**
- **RE**
- **Security**



PORT TAMPA BAY™

REROUTE YOUR THINKING™

DOWNTOWN



HOOKER'S POINT



PORT SUTTON



PENDOLA POINT



PORT REDWING

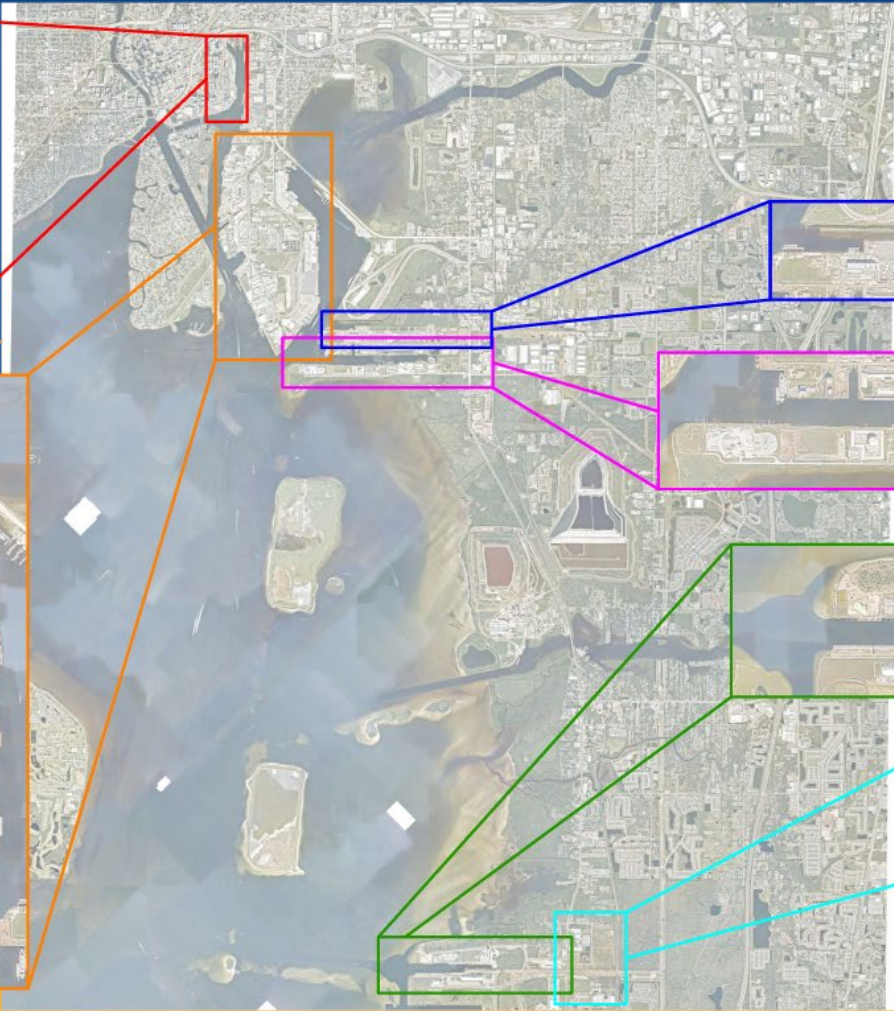


SOUTH BAY



SA BAY™

REROUTE YOUR THINKING™



Energy - Bulk

- Central Florida's hub for gasoline, diesel, jet fuel, ethanol, lube oil
- Partnership between Port Tampa Bay and petroleum companies at REK
- Central Florida Pipeline connecting Port Tampa Bay to Orlando



BUCKEYE PARTNERS, L.P.



Pasco Terminals, Inc.

Fertilizer & Agriculture - Bulk

- One of the world's leading fertilizer export ports
- Ardent Mills – New tenant at Port Redwing
- Diverse mix of dry and liquid bulk cargoes



Knowledge grows



GULF SULPHUR

Tampa Juice Service, Inc.



Construction & Building Materials – Bulk & Breakbulk

- Florida's largest steel port
 - Processing & Distribution
 - Manufacturing & Fabrication for Export
- Lumber & forest products
- Cement
- Aggregates – Granite & Limestone
- Gypsum & Fly Ash



Shipbuilding & Repair

- Four major shipyards – one of the largest hubs in the Southeast
- Refit, repair & maintenance
- New ship construction

TAMPASHIP



Cruise

- Six homeported vessels and over 1.2 M passengers/year projected FY 2023



- Expansion of container terminal
- New on-dock trans-load warehouse planned

COLD STORAGE WAREHOUSE

NEW EXPANSION TRANS-LOAD WAREHOUSE FACILITIES

ON-DOCK RAIL

NEW EXPANSION 30 ACRES

EXISTING 67 ACRES

**NEW EXPANSION BERTH 214
1300 FT**

**BERTH 213
1300 FT**

**BERTH 212
760 FT**

**BERTH 210/211
1200 FT**



Refrigerated

On-dock Cold Storage

135,000 SF state of the art facility:

- On site CBP Ag inspection and fumigation services
- 148 reefer plugs
- Food grade glycol refrigerant throughout
- Cross dock container yard connectivity w/ truck capacity
- Adjacent berth with dedicated mobile harbor crane
- Uninterrupted cold chain solution
- Non-union operation
- 2 Gottwald Mobile harbor cranes

Services: Costa Rica, Honduras, Guatemala & Mexico



Ro-Ro & Automotive



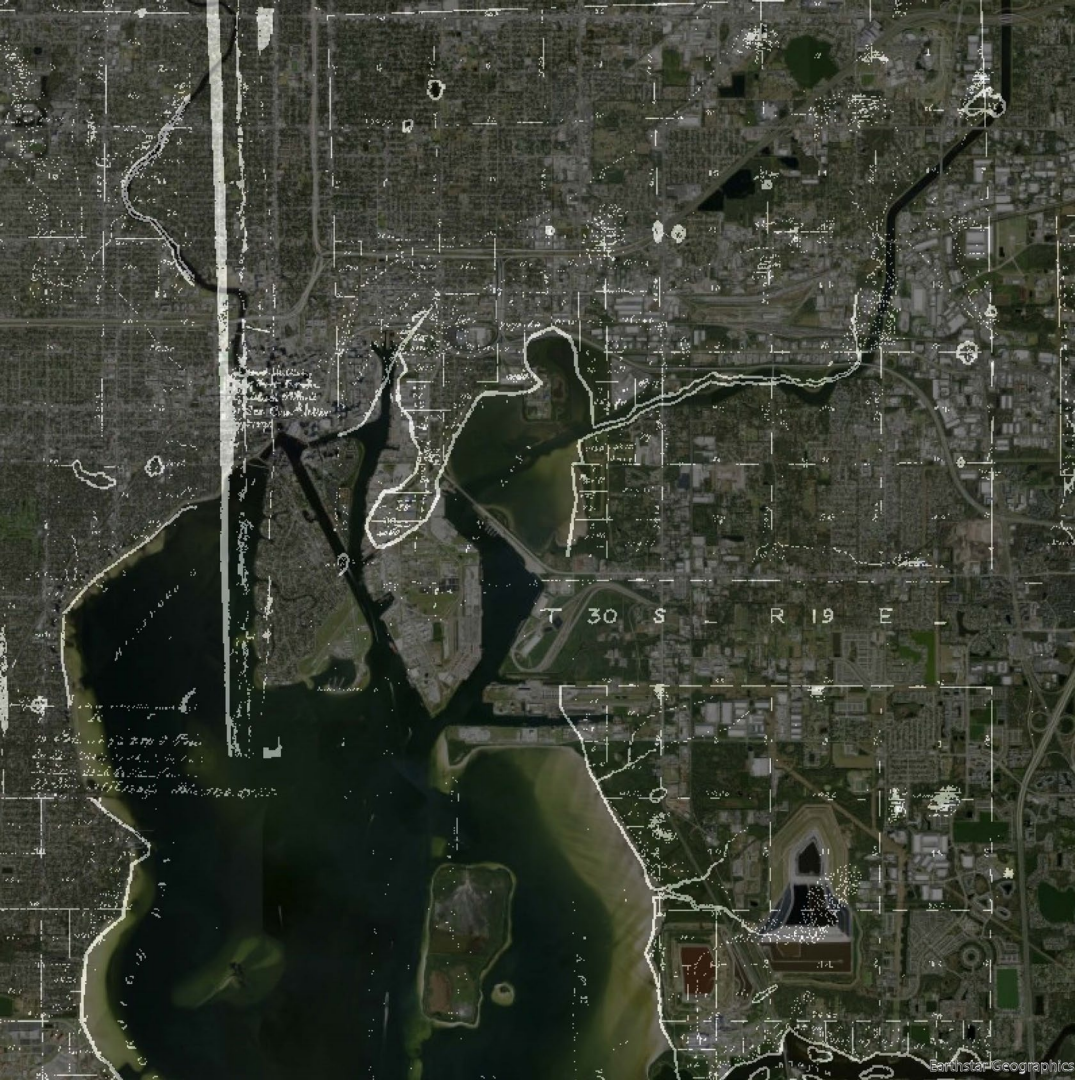
PORT
TAMPA BAY™
REROUTE YOUR THINKING™

- New lease agreement with Glovis providing shipment, handling, storage and processing of automobiles.
- Short sea imports from Mexico due to plant expansion, as well as export opportunities.



PORT
TAMPA BAY™
REROUTE YOUR THINKING™

1853 Shoreline vs Current Land Area



PORT
TAMPA BAY™

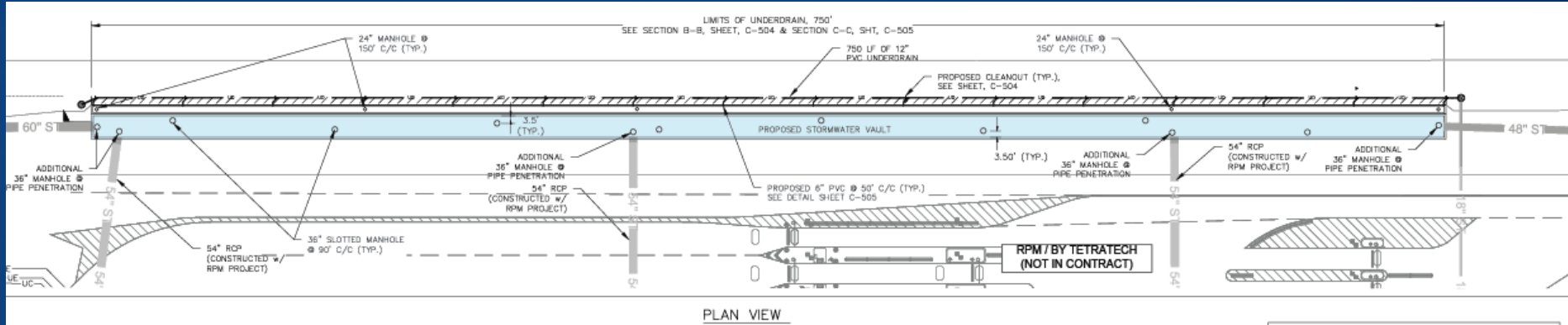
REROUTE YOUR THINKING™

CONTAINER YARD

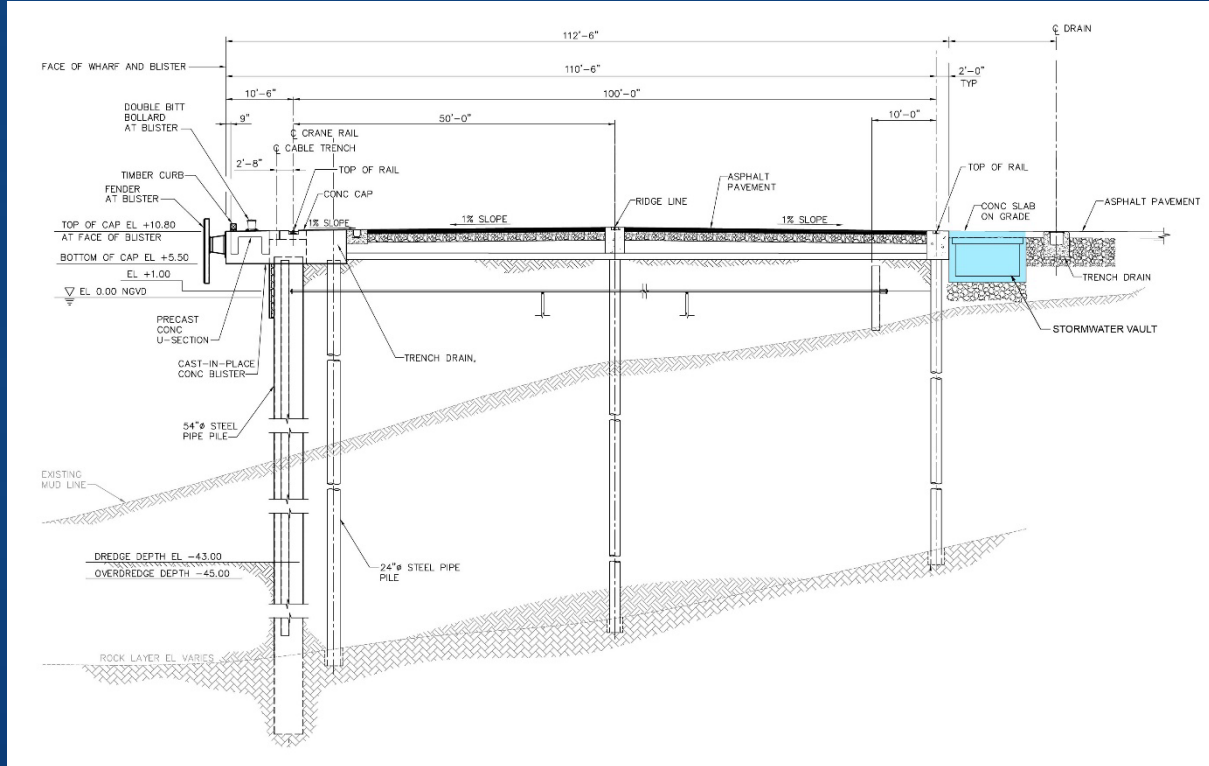


PORT
TAMPA BAY™
REROUTE YOUR THINKING™

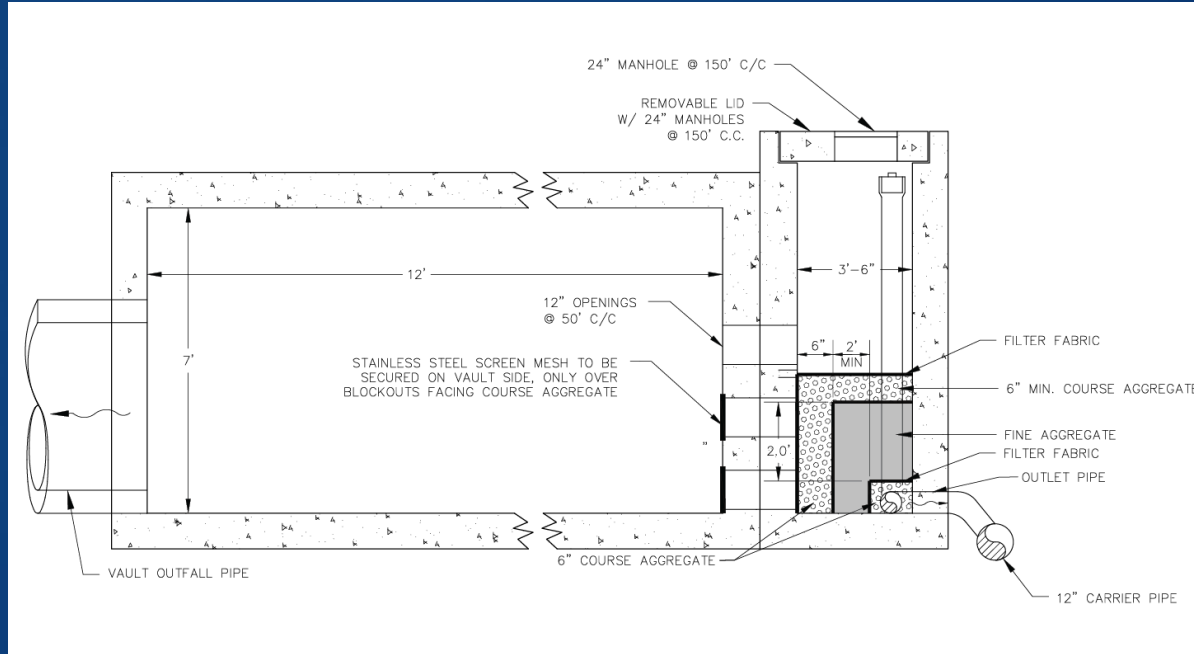
PLAN VIEW



CROSS SECTION



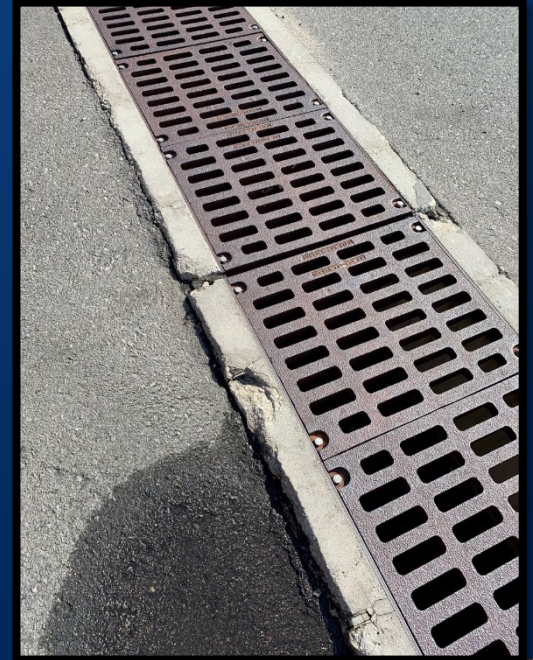
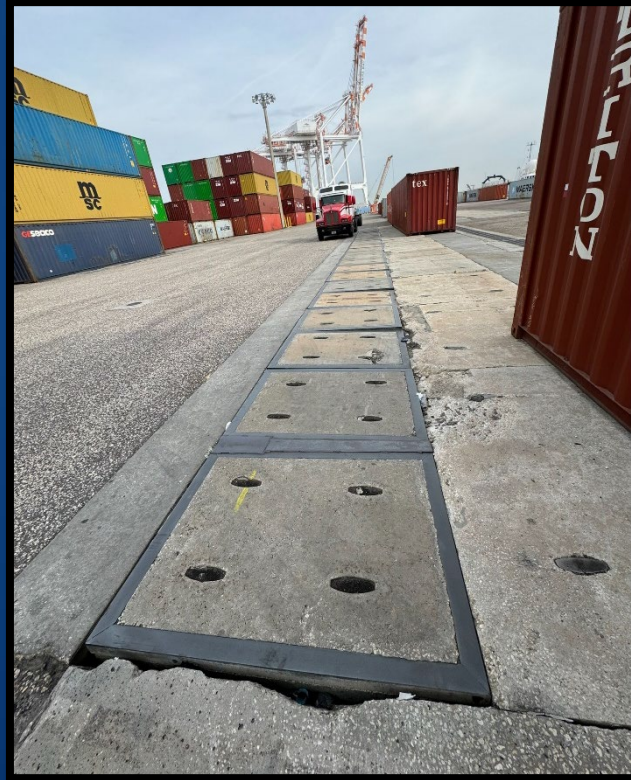
BERTH 211 – STORMWATER VAULT DETAIL



STORMWATER VAULT



VAULT GRATES



PORT
TAMPA BAY™
REROUTE YOUR THINKING™

Improving Water Quality in Tampa Bay

SR 45 Pond 1

FDOT pond enhanced with CMAC by National Stormwater Trust

Project Startup in June 2022

Stormwater Nutrient Credits allocated to Port Tampa Bay



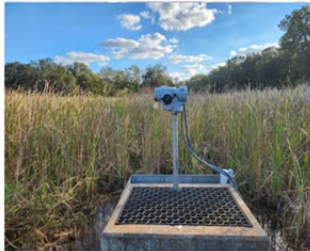
FL-D7-HILL-003 (SR 45 Pond 1)

SR 676 Pond 3

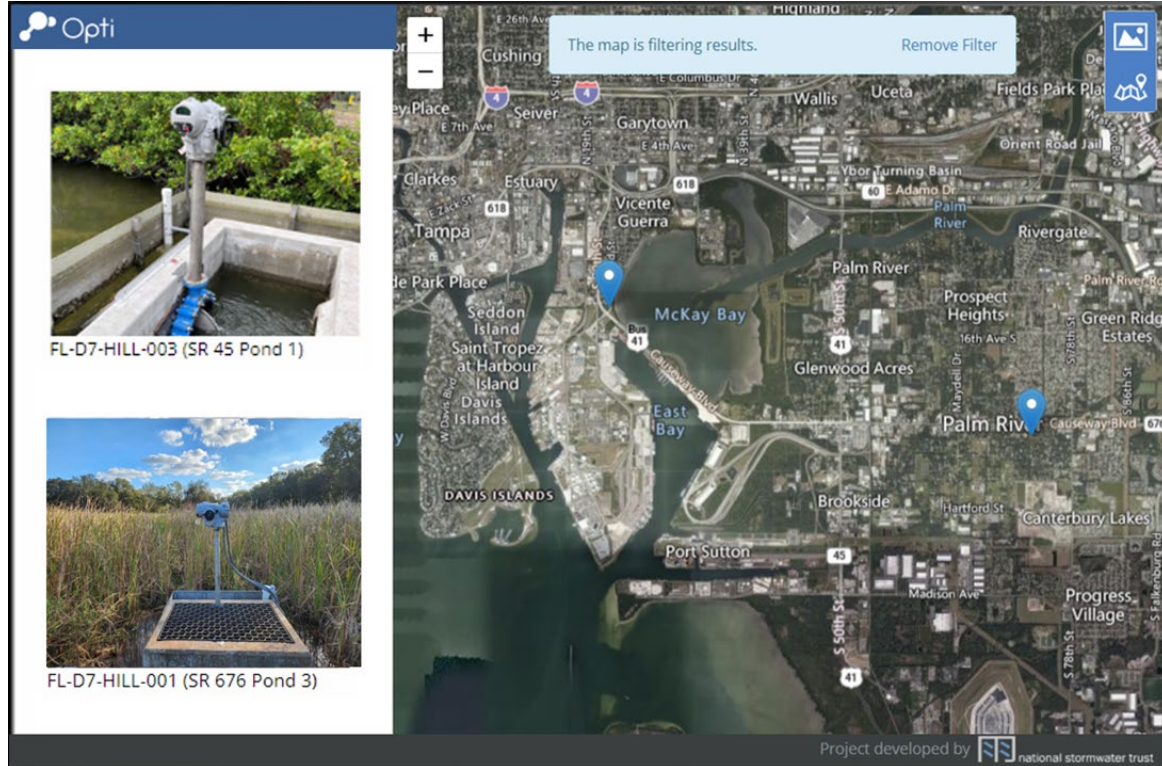
FDOT pond enhanced with CMAC by National Stormwater Trust

Project Startup in December 2022

Stormwater Nutrient Credits allocated to Port Tampa Bay



FL-D7-HILL-001 (SR 676 Pond 3)

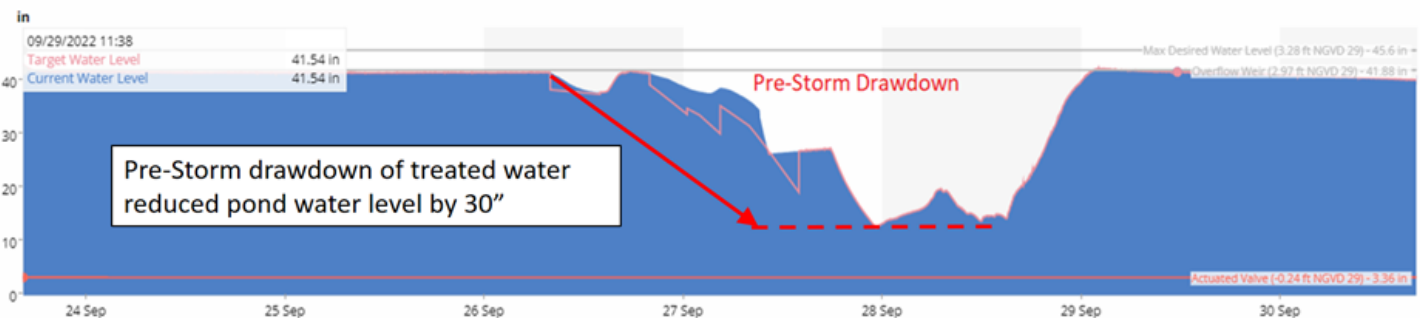


Water Elevation

Relative to Water Level Sensor

12hr | 24hr | 48hr | [1wk](#)

Smart Pond Performance During Hurricane Ian



Event Rainfall

Tipping Bucket Rain Gauge

12hr | 24hr | 48hr | [1wk](#)

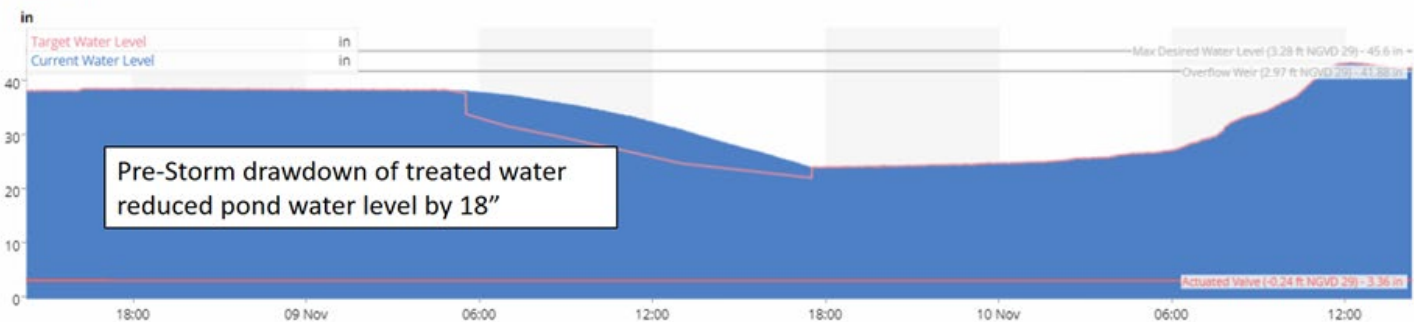


Water Elevation

Relative to Water Level Sensor

12hr | 24hr | [48hr](#) | 1wk

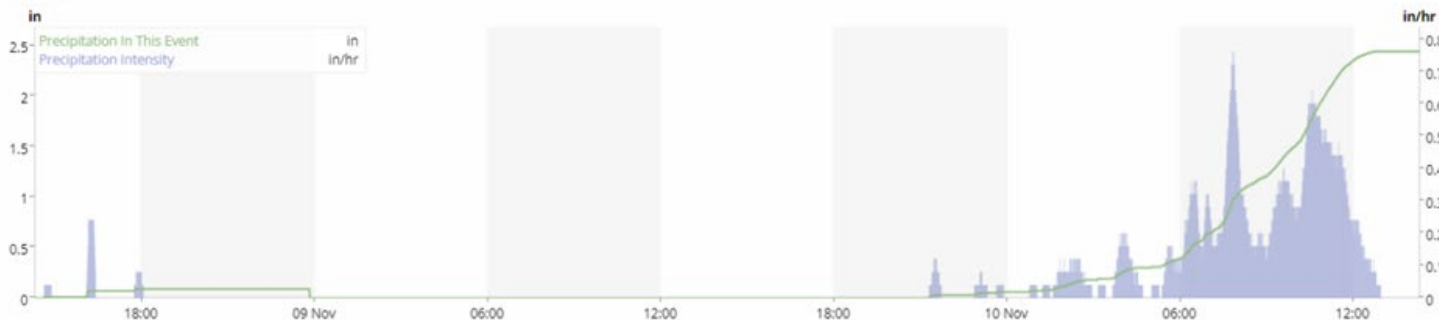
Smart Pond Performance During Hurricane Nicole



Event Rainfall

Tipping Bucket Rain Gauge

12hr | 24hr | [48hr](#) | 1wk





Energy



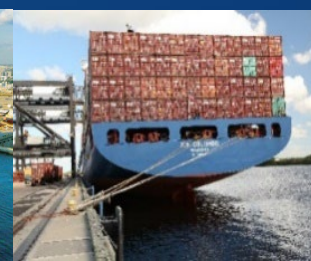
Fertilizer



Building Materials



Cruise



Containers



Refrigerated

FUTURE TRENDS

- NEW STATEWIDE STORMWATER RULE
- ALTERNATIVE FUEL SOURCES (hydrogen, ammonia, LNG,)
- ELECTRIFICATION
- SUPPLY CHAIN RESILIENCY
- CLIMATE AFFECTING SUPPLY CHAIN (PANAMA CANAL)
- ZERO CARBON EFFORTS
- CARBON CAPTURE
- GRANT FUNDING OPPORTUNITIES
- GRR AND EXPANSION
- NEED ABILITY TO ADAPT AND GROW



PORT
TAMPA BAY™

REROUTE YOUR THINKING™

